

1901 AVENUE OF THE STARS SUBLEASE LOS ANGELES, CA 90067



Offering Summary

Lease Rate:	Negotiable
Available SF:	Up to 2,500 SF
Year Built	1967
Suite Renovated:	2025

Location Description

Century City is the center of Business on the Westside of Los Angeles. The building is located next to the world class Century City Mall and within walking distance.

Sublease Description

4 window offices and 2 interior offices workstations within a prestigious law firm. Subtenant will have access to kitchen and conference room. All offices come furnished and the term is negotiable. Golf course views.

Lease Highlights

- Sublessor IT will provide secure network connectivity for computers, printing, Wi-Fi, and internet access. These services are delivered through a managed network infrastructure, including VLANs, switches, and firewalls.
- Copier access will be available for copy and scan functions using a bill code.
- Conference rooms are equipped with systems that support video conferencing, screen sharing, and presenting using a tenant-provided laptop. All rooms are native Zoom Rooms but are also compatible with Microsoft Teams, Google Meet, Webex, and other major platforms.
- Brand new offices.

RICK GOLD

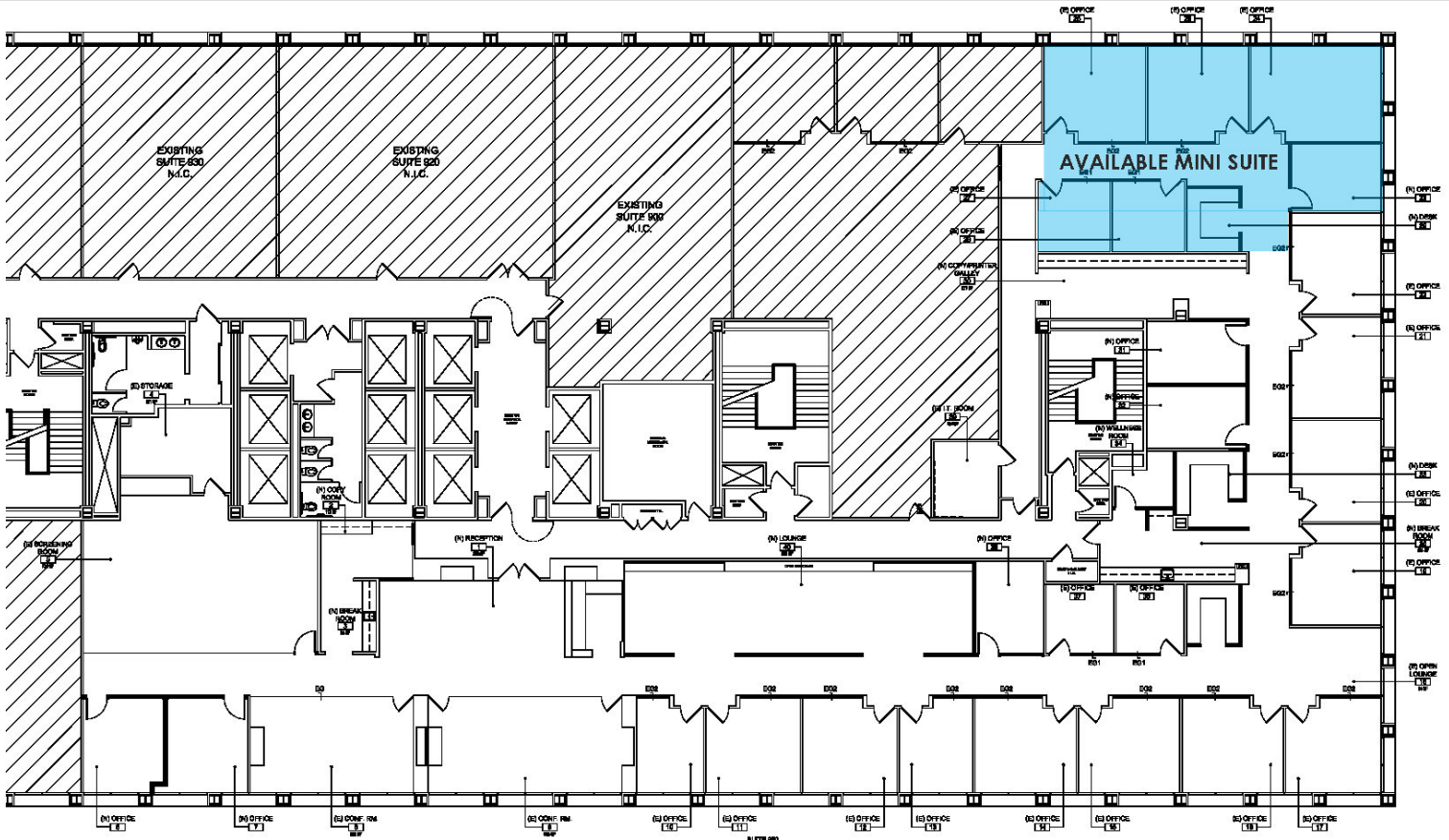
310.806.6106
rgold@naicapital.com
CA DRE #00549936

MICHAEL ARNOLD

310.694.4550
m.arnold@ahg.global
CA DRE #01221125



1901 AVENUE OF THE STARS SUBLEASE
LOS ANGELES, CA 90067



RICK GOLD

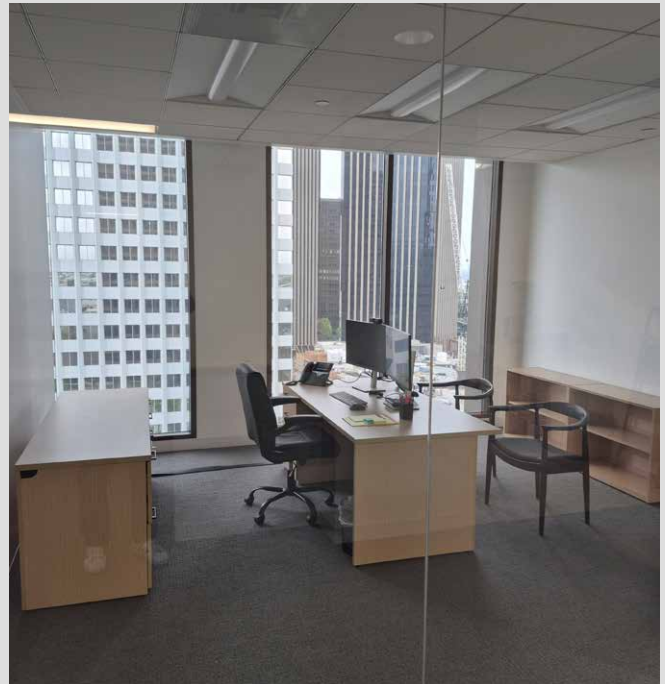
310.806.6106
rgold@naicapital.com
CA DRE #00549936

MICHAEL ARNOLD

310.694.4550
m.arnold@ahg.global
CA DRE #01221125



1901 AVENUE OF THE STARS SUBLEASE LOS ANGELES, CA 90067



RICK GOLD

310.806.6106
rgold@naicapital.com
CA DRE #00549936

MICHAEL ARNOLD

310.694.4550
m.arnold@ahg.global
CA DRE #01221125

No warranty, express or implied, is made as to the accuracy of the information contained herein. This information is submitted subject to errors, omissions, change of price, rental or other conditions, withdrawal without notice, and is subject to any special listing conditions imposed by our principals. Cooperating brokers, buyers, tenants and other parties who receive this document should not rely on it, but should use it as a starting point of analysis, and should independently confirm the accuracy of the information contained herein through a due diligence review of the books, records, files and documents that constitute reliable sources of the information described herein. Logos are for identification purposes only and may be trademarks of their respective companies. NAI Capital Commercial, Inc. CAL DRE Lic. #02130474